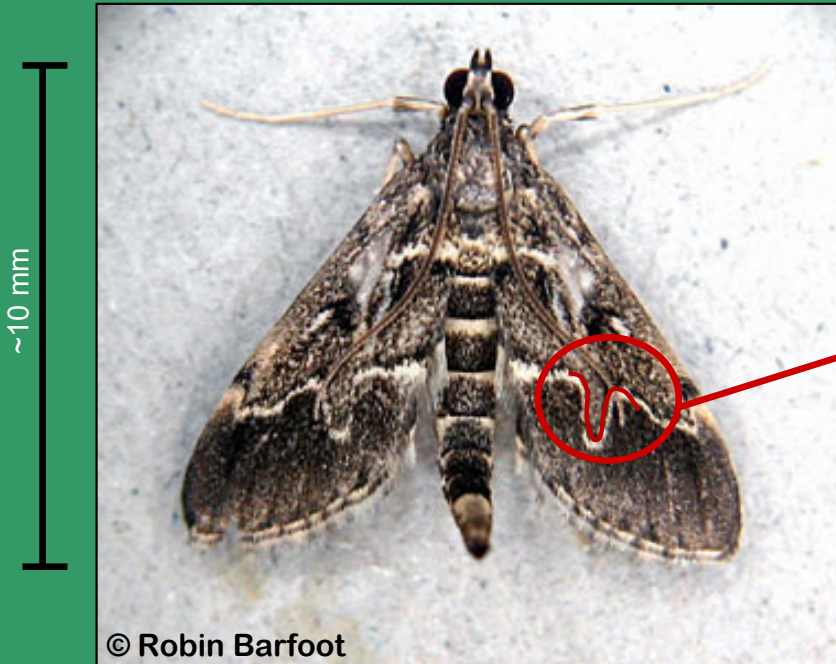




# *Duponchelia fovealis* (Zeller)

Pyraloidea: Crambidae

## FIELD SCREENING AID



© Robin Barfoot

- Forewing colored gray or grayish-brown with white or yellowish-white transverse lines
- Second line on forewing with a distinctive finger-like projection
- Forewing length ~9 to 11 mm (~3/8 in)
- Long antennae, usually folded back
- Abdomen long, slender, usually upturned
- Body length ~9 to 12 mm (~3/8 in)

***Duponchelia fovealis* looks similar to several North American crambid species. The general color of *D. fovealis* is not distinctive. However, the most distinctive wing character is a curve on the middle of the second transverse line. For final identification, specialists need to dissect and examine adult male genitalia.**

This field aid was produced by Julieta Brambila and Dr. Steve Passoa (USDA/APHIS/PPQ) for CAPS (Cooperative Agriculture Pest Survey program). The photograph is used with permission from the author, Robin Barfoot. This image is available at the address [Duponchelia fovealis | UKmoths](#). Information was provided by Dr. Alma Solis (USDA-ARS). Other information was obtained from the CDFA Detection Advisory (<http://www.kernag.com/dept/news/2010/2010-san-diego-duponchelia-fovealis-07-16-2010.pdf>) and from Trematerra, P., 1990, Morphological aspects of *Duponchelia fovealis* (Zeller) (Lepidoptera, Pyralidae), Redia 73 (1): 41-52 (title and text in Italian).

Updated May 2023