

Bagrada Bug

(Bagrada hilaris)



Photo: Gevork Arakelian, LA County entomologist, bugwood.org #5493926



COMMUNITY FIRST DETECTOR



Bagrada Bug

Female and male Bagrada bugs

- Stink bug
- Native to Africa
- First detected in the US
 - Los Angeles County, CA
2008
- Also called painted bug, painted stink bug, African stink bug

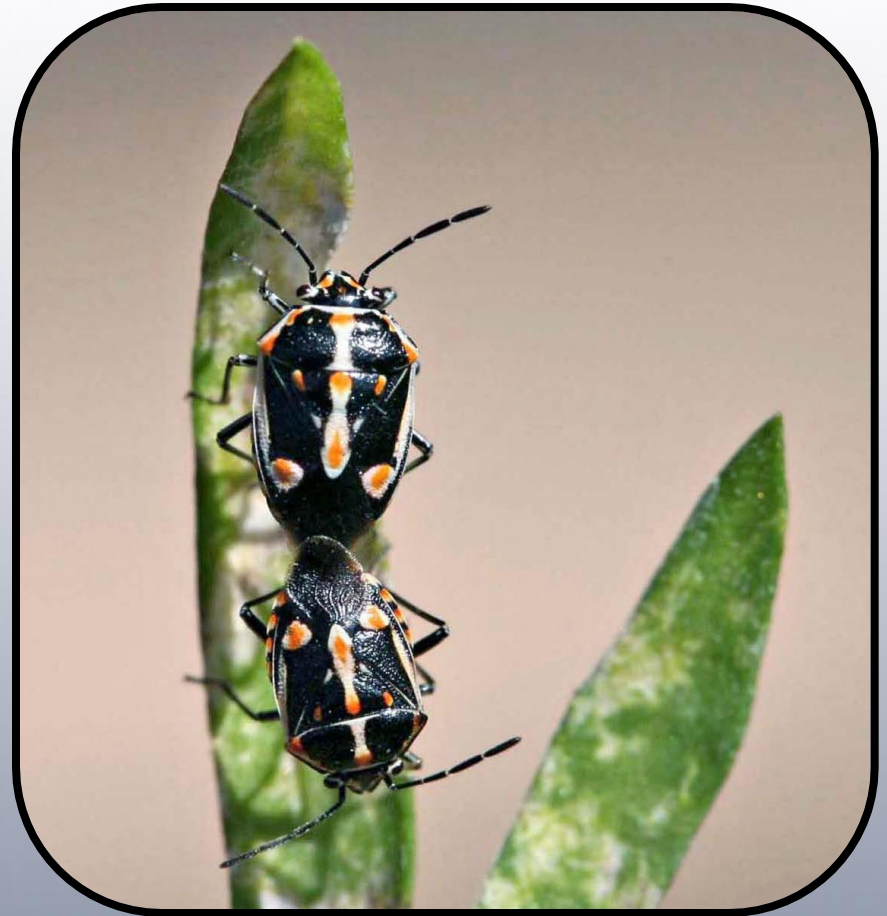


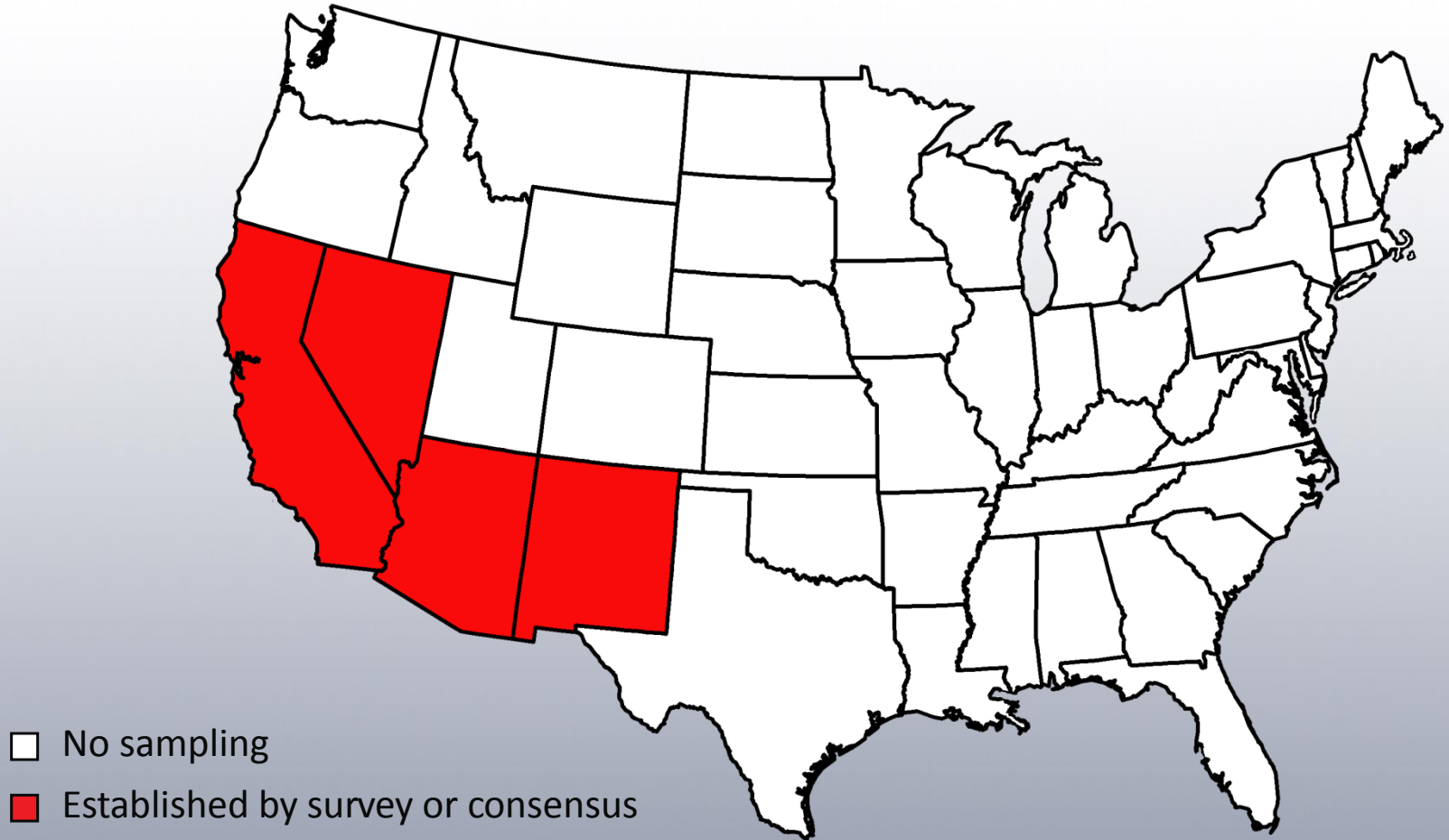
Photo: Gevork Arakelian, LA County entomologist, bugwood.org #5493926



COMMUNITY FIRST DETECTOR



Distribution



Map based on: <http://www.ncipmc.org/alerts/bagradabug.pdf>.



COMMUNITY FIRST DETECTOR



Susceptible Plants

Broccoli



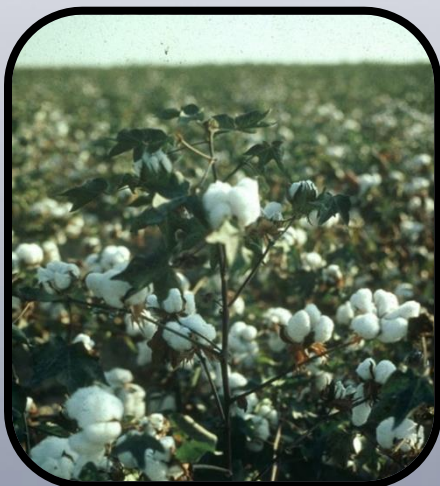
Sorghum



Potato



Cotton



Cabbage



Photo: (Top row) - Howard F. Schwartz, Colorado State University, www.Bugwood.org # 5363676; # 5359959. (Bottom Row) - USDA APHIS PPQ Archive, USDA APHIS PPQ, www.Bugwood.org #UGA1148076; Gerald Holmes, Valent USA Corporation, www.Bugwood.org # 1573271. (Far Right) - Nikolai Sokolov, www.Bugwood.org # 5444203



COMMUNITY FIRST DETECTOR



Identification: Adult

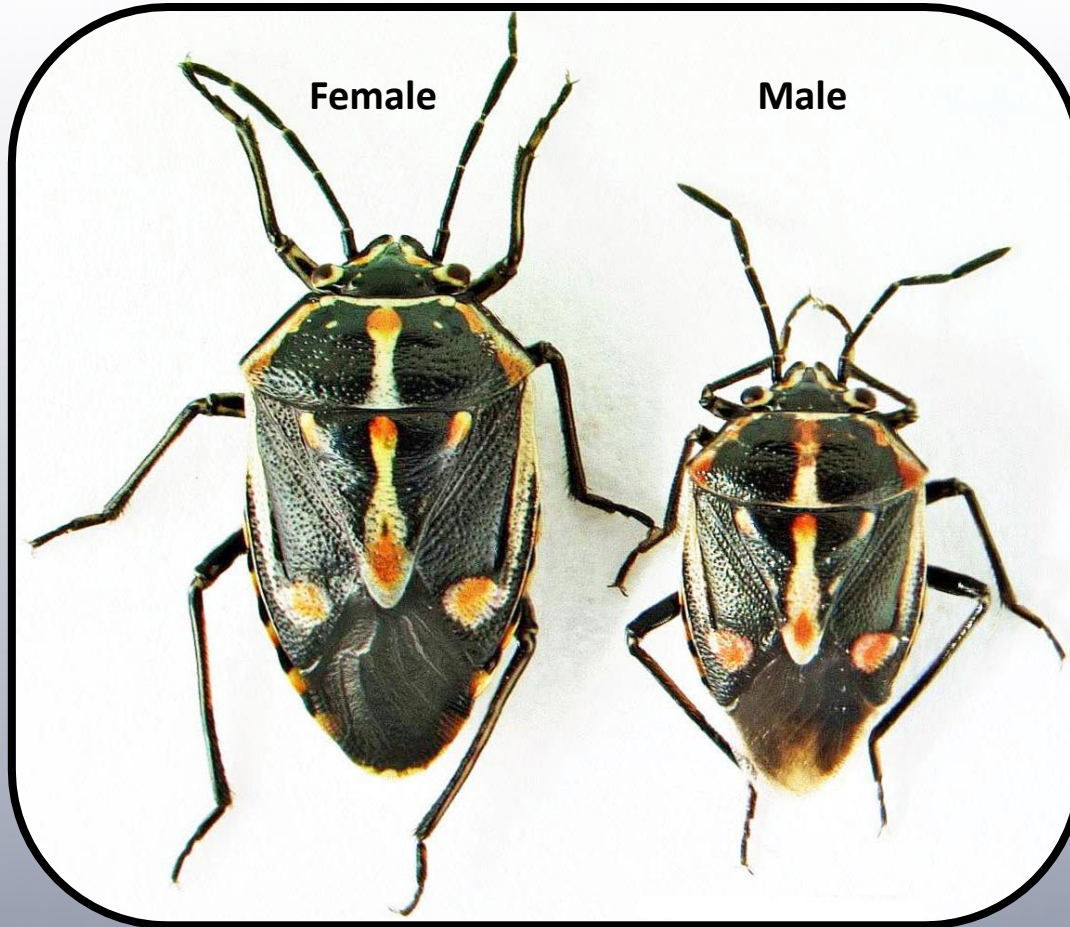


Photo: Gevork Arakelian, LA County entomologist, bugwood.org #5493925



COMMUNITY FIRST DETECTOR



Identification: Nymphs

Nymphs



Nymph



Adults and nymphs



Nymph



Photos: Ron Hemberger, Irvine, Orange Co., Calif. All rights reserved.



COMMUNITY FIRST DETECTOR



Life Cycle

- Overwinter as adults
- Females lay eggs in soil or on host plants
- Incomplete metamorphosis
- Nymphs molt 4 times

Eggs

4 nymphal stages from early to late instars

Adult



Photos: (*Eggs and the last instar*) - Eric Natwick, Cooperative Extension Imperial County; (*others*) - Surendra Dara, UC Cooperative Extension

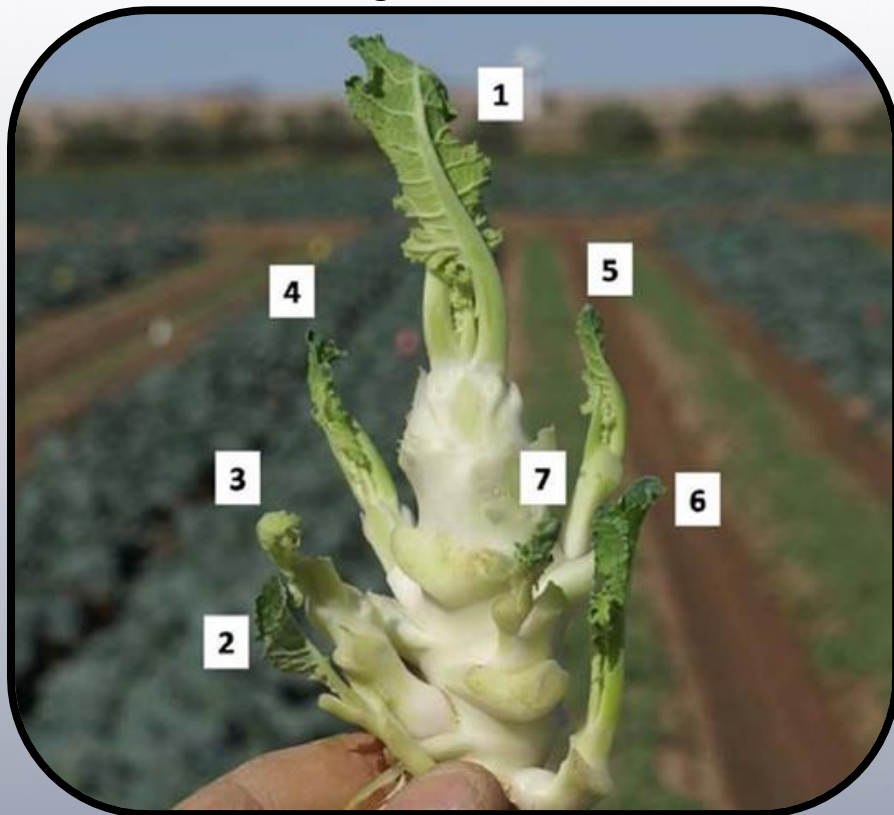


COMMUNITY FIRST DETECTOR



Damage

Damage to broccoli



Bagrada bugs feeding on a fig



Bagrada bugs feeding on a collard greens

Photos: (Left) - John Palumbo, Univ. of Arizona; (Top) - Judi V. Cugat; (Bottom) - Wikimedia Commons.



COMMUNITY FIRST DETECTOR



Management

- Weed management
- Soil cultivation
- Remove crop residues
- Hand removal
- Pyrethroid, neonicotinoids, organophosphate insecticides
- Pyrethrins and azadirachtin for organic growers

Adults and nymphs on Alyssum plants



Look-alike Species



Adult and nymphal stage Bagnrada bugs in San Pedro, CA

Photo: Delbert Crawford



COMMUNITY FIRST DETECTOR



Look-alikes

Bagrada Bug



Ladybird Beetle



Harlequin Bug



Photos: (Left) - Gevork Arakelian, LA County entomologist, bugwood.org #5493926; (Middle and Right) Russ Ottens, University of Georgia, www.bugwood.org, #1242018; #5377630



COMMUNITY FIRST DETECTOR



Authors

Richard Hoenisch, M.S.

Department of Plant Pathology, University of
California at Davis

Carla J. Burkle, B.S.

Department of Entomology and Nematology,
University of Florida

Amanda C. Hodges, Ph.D.

Associate Extension Scientist, Department of
Entomology and Nematology, University of Florida



COMMUNITY FIRST DETECTOR



Editors

Matthew D. Smith, Ph.D.

Postdoctoral Associate, Department of Entomology
and Nematology, University of Florida

Stephanie Stocks, M.S.

Assistant-In, Extension Scientist, Department of
Entomology and Nematology, University of Florida

Keumchul Shin, M.S.

Graduate student, Doctor of Plant medicine
program, University of Florida



COMMUNITY FIRST DETECTOR



Reviewers

Andrew Derksen, M.S.

Pest Survey Scientist/Biological Scientist II, Florida
Department of Agriculture and Consumer Services,
Division of Plant Industry

Susan Webb, Ph.D.

Associate Professor, Department of Entomology and
Nematology, University of Florida

Hugh Smith, Ph.D.

Assistant Professor, Gulf Coast Research and Education
Center, University of Florida



COMMUNITY FIRST DETECTOR



Collaborating Agencies

- U.S. Department of Agriculture Animal and Plant Health Inspection Service (USDA-APHIS)
- Cooperative Agricultural Pest Survey Program (CAPS)
- Florida Department of Agriculture and Consumer Services (FDACS)
- National Plant Diagnostic Network (NPDN)
- Sentinel Plant Network (SPN)
- Protect U.S.
- University of Florida Institute of Food and Agricultural Sciences (UF-IFAS)



COMMUNITY FIRST DETECTOR



Educational Disclaimer and Citation

- This presentation can be used for educational purposes for NON-PROFIT workshops, trainings, etc.
- Citation:
 - Hoenisch, R., M.S., Burkle, C., B.S., Hodges, A., Ph.D., 2014. Bagra da Bug (*Bagra da hiliaris*), June 2014



COMMUNITY FIRST DETECTOR



References

- Arakelian, G. 2008. Bagrada Bug (*Bagrada hilaris*). Los Angeles County Agricultural Commissioner/Weights and Measures Department, CA. Accessed April 2013
– http://www.cdffa.ca.gov/plant/PPD/PDF/Bagrada_hilaris.pdf.
- Arakelian, G. “Bagrada bug, *Bagrada hilaris*”. Center for Invasive Species Research – University of California, Riverside. Accessed April 2013
– http://cistr.ucr.edu/bagrada_bug.html
- Halbert, S. E. and J. E. Eger. 2010. Bagrada bug (*Bagrada hilaris*) (Hemiptera: Pentatomidae): an exotic pest of Cruciferae established in the western USA. Accessed April 2013
– <http://edocs.dlis.state.fl.us.lip.hscl.ufl.edu/fldocs/doacs/dpi/pestalert/01750.pdf>
- Palumbo, J. C. 2010. The Bagrada bug, a New Invasive pest of cole crops in Arizona. University of Arizona, Yuma, AZ. Accessed April 2013
– http://ag.arizona.edu/crops/vegetables/advisories/docs/Bagrad_bug_2010_Palumbo.pdf.
- Palumbo, J.C. and E.T. Natwick. 2010. The Bagrada bug (Hemiptera: Pentatomidae): A new invasive pest of cole crops in Arizona and California. Plant Health Progress. Accessed April 2013
– <http://www.plantmanagementnetwork.org/sub/php/brief/2010/bagrada/>
- Reed, D. 2012. Bagrada bug: biology, host range and effects on cole crops. Center for Invasive Species Research – University of California, Riverside. Accessed April 2013
– <http://cistr.ucr.edu/pdf/capca-bagrada-darcy-reed-sept-19-2012.pdf>



COMMUNITY FIRST DETECTOR

