

Key to some families of Collembola

There are 2 suborders of Collembola that you should be able to recognize, ***Symphyleona*** and ***Arthropleona***. These may be separated by the following characters:

1. Body shape oval or globular (Fig. 1), abdomen with 4 basal segments fused; segments 5 & 6 forming a small apical papilla s.o. ***Symphyleona (Sminthuridae)***
 - Body elongate, abdomen with 6 distinct segments (s.o. ***Arthropleona***)²

2. Prothorax well developed (Fig. 2), similar in shape and size to remaining thoracic segments; visible from above; with dorsal bristles or setae³
 - Prothorax reduced (Fig. 3) and usually not visible from above; lacking dorsal setae or bristles⁴

3. Eyes absent; antennae with 3rd segment with 2-3 cone-like sense organs as well as papilla like sense organs ***Onychiuridae***
 - Eyes usually present; 3rd antenna segment with only papilla-like organs ***Poduridae***

4. 4th abdominal segment at least 2X as long as 3rd along mid-dorsal line; body scaly or with clavate setae; furcula always well developed ***Entomobryidae***
 - 3rd and 4th abdominal segments about the same length along mid-dorsal line; body not scaly, with only simple setae; furcula often reduced ***Isotomidae***

Terms to remember:

furcula: forked springing apparatus, unique to Collembola

collophore: tubelike structure located on ventral side of 1st abdominal segment (Fig. 4)

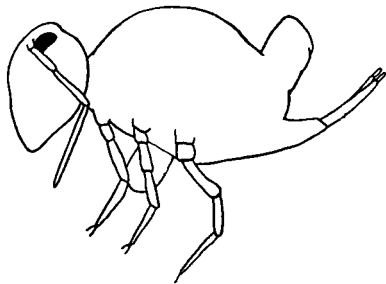


Figure 1

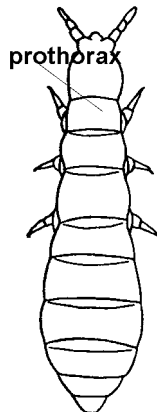


Figure 2

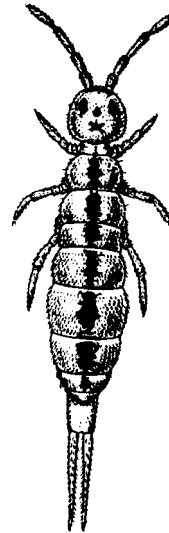


Figure 3

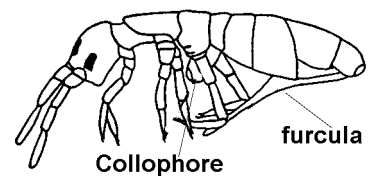


Figure 4